

■ **Walt Disney's Comics and Stories – Vol. 3 No. 2**  
**(November 1942)**

**Front Cover — Observations (IMG\_1266)**

**Photo Condition & Quality**

Clear, high-resolution image with full cover visibility, even lighting, and accurate color representation.



## Scene & Composition

- Donald Duck is shown striding forward across a grassy field through shallow water.
- Donald wears a brown cap and matching vest with red sleeves, and raises one hand outward as if in motion.
- Two small insects trail behind Donald at ground level.
- Background consists of a pale blue sky with soft horizontal cloud bands.
- Issue text at right reads: **November 1942 – Vol. 3 No. 2 – 10¢** with the *Walt Disney's Comics and Stories* masthead above.

## Physical Condition Findings

- Multiple vertical creases visible across the cover, including through Donald's torso and background sky.
- Moderate spine wear with color-breaking stress lines.
- Edge wear along the right and bottom margins.
- Corner rounding present, most noticeable at lower-right.
- Light surface abrasion affecting the blue sky areas.
- Mild soiling and overall age toning.

## Color & Printing Quality

- Blues and oranges remain vibrant.
- Brown and red costume elements show minimal fade.
- Black outlines remain sharp and well-registered.

## Paper & Structural Notes

- Even oxidation along all edges.
- Cover attached at both staples, though spine material loss is visible.

## Overall Impression

An attractive late-1942 cover with moderate handling wear and visible spine stress.

---

# Back Cover — Observations (IMG\_1267)

## Photo Condition & Quality

Evenly lit image with full page visible and good clarity of text and artwork.



**LAUGH**  
the year through  
with the big sixty-  
four page issues  
of . . .

**WALT DISNEY'S**  
**COMICS AND STORIES**

**\$1.00 per year**  
POSTPAID  
(12 Issues)

~~\$1.50~~ **\$2.00** for two years  
POSTPAID  
(24 Issues)

Fast-moving, exciting, fun-filled adventures  
with Donald Duck, Mickey, Pluto, and all the  
other famous Disney characters. Printed in  
full color. Subscribe now!

**CLEAN — INSTRUCTIVE — ENTERTAINING**

Mail to: **K. K. PUBLICATIONS, Inc.**  
DEPT. NV POUGHKEEPSIE, NEW YORK

Gentlemen:  
Enclosed find \$\_\_\_\_\_ for which please enter the following subscription  
to **Walt Disney's Comics and Stories** for \_\_\_\_\_ monthly issues beginning  
with \_\_\_\_\_ issue.

Name \_\_\_\_\_

Street and Number \_\_\_\_\_

City or Town \_\_\_\_\_ State \_\_\_\_\_

Donor's Name \_\_\_\_\_

Address \_\_\_\_\_

DONALD WELTZ  
WEST HAMBURG PA  
4 43 12455A AG

## Scene & Composition

- Promotional advertisement encouraging subscription to *Walt Disney's Comics and Stories*.
- Mickey and Minnie are depicted walking together while bees fly overhead toward a hive.
- Large text block promotes value and entertainment.
- Subscription coupon occupies the lower third.

## Physical Condition Findings

- Noticeable wear across the yellow background.
- Heavy wear and paper loss at the lower-right corner.
- Edge fraying along the right side and bottom edge.
- Light creasing near the upper margin.
- Moderate surface soiling in the coupon area.

## Color & Printing Quality

- Yellow background retains reasonable saturation but shows discoloration.
- Reds and blacks remain clear and legible.

## Paper Condition

- Uniform tan aging throughout.
- No moisture rippling observed.

## Overall Impression

Heavily worn back cover with significant corner loss but intact structure.

---

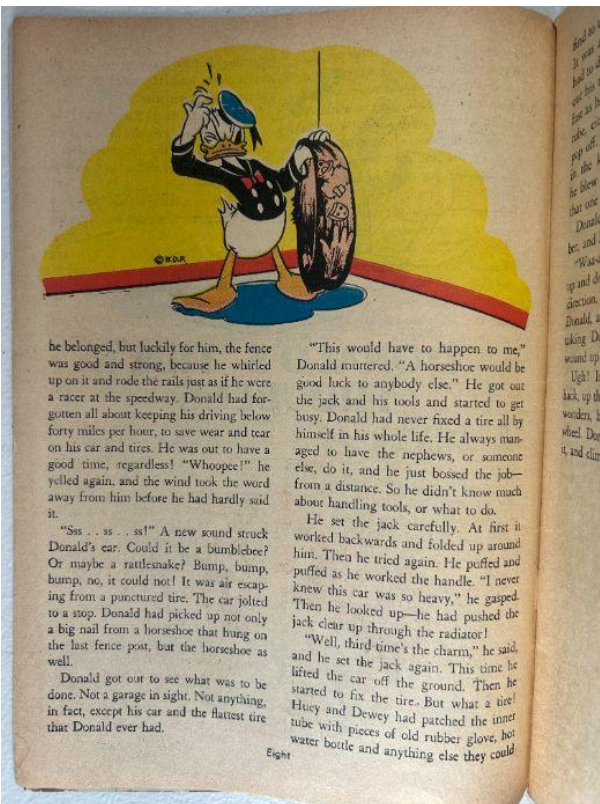
## Interior Pages — Observations (IMG\_1268–IMG\_1273)

### Photo Condition & Quality

Clear interior images showing full panels, margins, gutters, and accurate color tones.

### Page Color

tan to medium brown



# Interior Pages Findings

## Artwork & Story Content

- Includes a **Mickey Mouse** western-themed sequence.
- **Bucky Bug** Silly Symphonies segment featuring Humpty Dumpty dialogue.
- Additional Mickey Mouse comedic and courtroom-style story pages.
- Prose and illustrated text pages featuring Mickey and Goofy.

All pages appear complete with no missing panels or clipped sections.

## Color & Printing Quality

- Primary colors remain strong with expected fade in lighter areas.
- Halftone patterns consistent with Dell printing of the early 1940s.
- Black linework clean and stable.

## Paper Condition

- Moderate oxidation evident across all pages.
- Margin foxing present.
- Minor corner creasing and edge wear.
- Slight natural waviness; no moisture damage.
- No stains, tears, or writing observed.

## Structural Notes

- Pages securely attached at staples.
- Mild stress visible near the lower staple through interior wraps.
- Paper remains flexible with no brittleness.

## Overall Impression

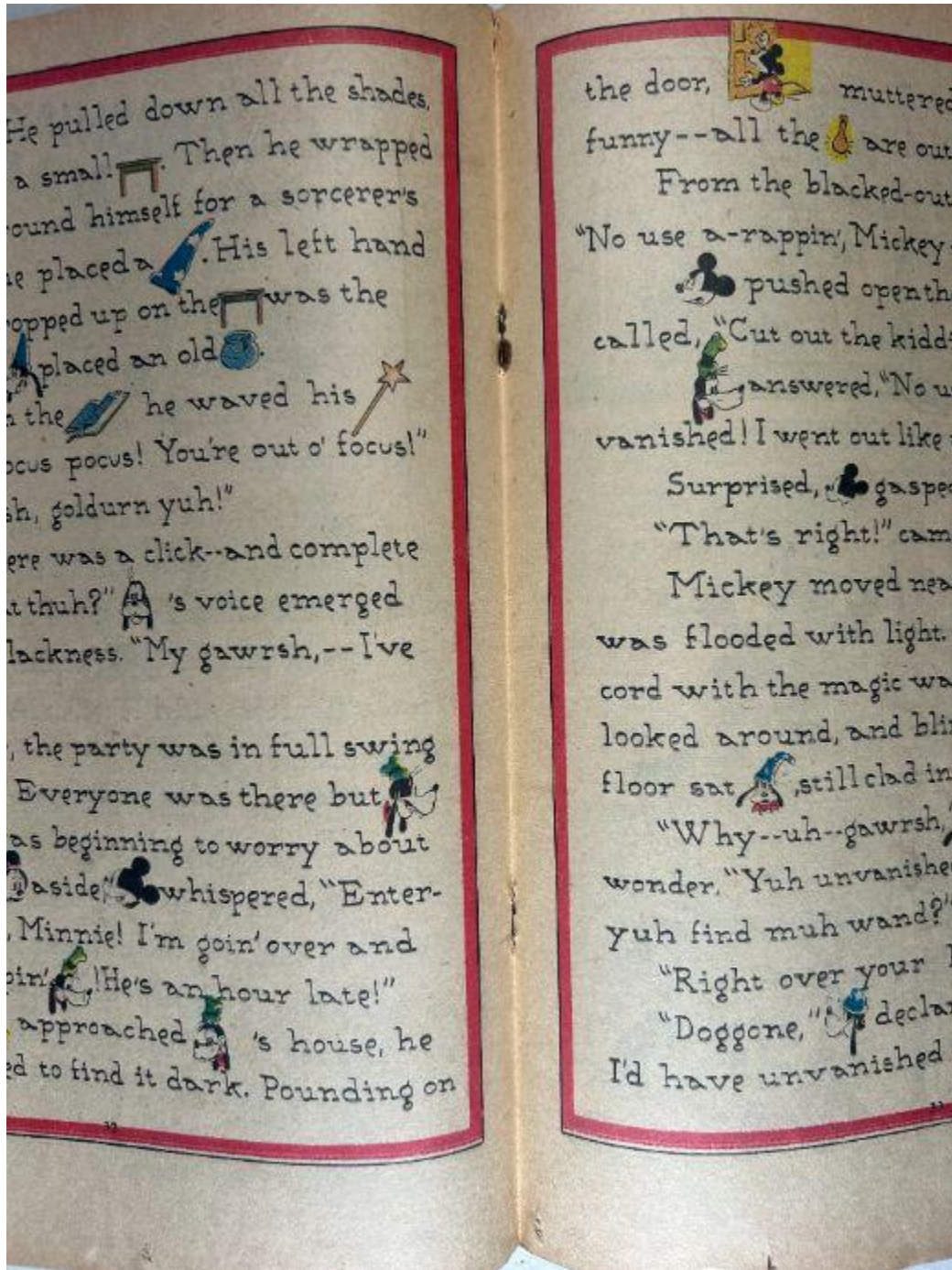
Complete and stable interior with typical Golden Age toning and moderate edge wear.

---

## Centerfold — Observations (IMG\_1274)

### Photo Condition & Quality

Clear two-page image with visible gutter alignment and staple locations.



## Physical Findings

- Centerfold fully attached at both staples.
- Slight tearing at the lower staple area.
- Even tan toning, darker along the fold.
- Light surface wrinkling without major creasing.

## Overall Impression

Intact centerfold with expected staple-area wear.

## Spine — Observations (IMG\_1275)

### Photo Condition & Quality

Clear side-profile view showing spine curvature, staple zones, and paper loss clearly.



## Structural Findings

- Severe paper loss along the spine.
- Long tears and breaks in the cover stock.
- Multiple open staple holes indicating splitting.
- Noticeable forward spine roll.
- Color-breaking vertical stress lines throughout.

## Surface Condition

- Heavy abrasion across the full length of the spine.
- Gloss entirely worn away.

## Overall Impression

Severely compromised spine with extensive structural damage.

# Upper Staple — Observations (IMG\_1276)

## Photo Condition & Quality

Macro image clearly showing staple and surrounding paper fibers.



## Staple Findings

- Significant tearing around the staple entry point.
- Moderate metal oxidation.
- Paper fibers split and frayed outward.
- Color layer loss around staple.

## Overall Impression

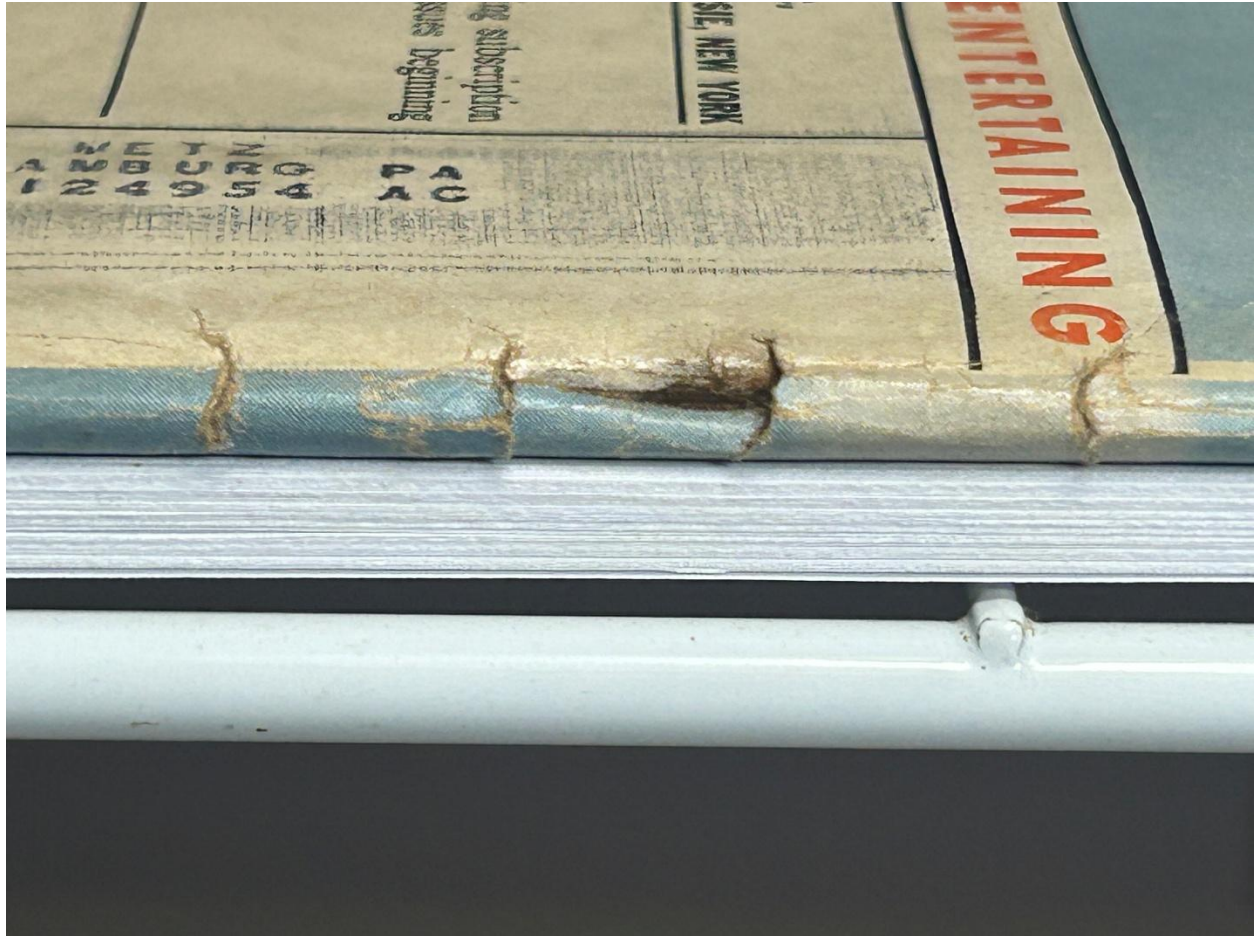
Upper staple remains attached but structurally weakened.

---

# Lower Staple — Observations (IMG\_1277)

## Photo Condition & Quality

Clear close-up showing deep cavity and layered paper damage.



## Staple Findings

- Large staple cavity with extensive missing paper.
- Staple legs angled outward from stress.
- Visible rust staining.
- Severe multi-layer paper separation.

## Overall Impression

Lower staple is heavily deteriorated and structurally unsound.

---

# Brittleness Test — Observations (IMG\_1278)

## Photo Condition & Quality

Clear macro image showing page corner flex and fiber texture.



## Findings

- Page bends smoothly without cracking.
- No chipping or flaking observed.
- Paper dry but retains flexibility.

## Overall Impression

Paper is aged but not brittle.